



SuperRange4 Cardbus

Public Safety 4.9GHz Mobility Client

The SuperRange4 Cardbus adapter is a hi-performance, hi-power FCC Part90Y certified 4.9GHz client solution specifically designed to work with 4.9GHz mesh networks. In addition to high output power, it features excellent receiver performance, external antenna connectors, advanced mobility functionality and configuration, as well as Cisco CCX 4.0 support with the latest QoS and Security standards.

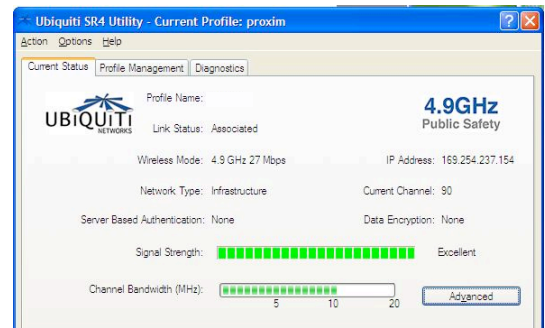


Mesh Networking and Mobility Support

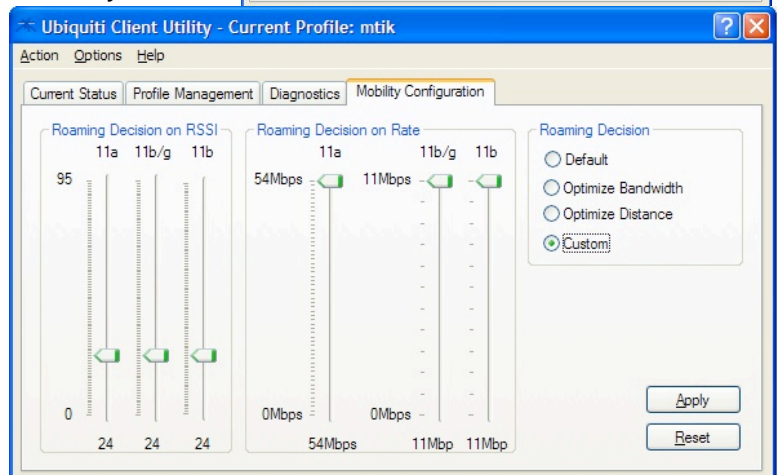
In addition to the superior range and radio performance of SR4C, Ubiquiti has developed an enhanced application that has been qualified and tested with systems from Tropo, Skypilot Networks, BelAir Networks, Proxim, Packet Hop and others. The utility is able to scan all 4.9GHz channels, associate at 5/10/20MHz channels widths, and provide performance feedback to the end user. An advanced mobility application allows network administrators to optimize mobility performance based on a variety of thresholds such as signal level, data rate, and AP credentials.



4.9GHz MESH



Mobility Screen



Laptop equipped with Ubiquiti SR4C + external antenna

SuperRange4 Cardbus

TECHNICAL SPECIFICATIONS



495-499 Montague Expwy.
 Milpitas, CA 95035
 T (408)-942-3085
 F (408)-351-4973
<http://www.ubnt.com>

| CARD INFORMATION | | | | | | | |
|---|----------|--|-----------|------------------------|----------|-------------|-----------|
| Radio Operation | | Proprietary 4.9GHz based on OFDM 802.11a with QPSK/16QAM/64QAM | | | | | |
| Interface | | 32-bit Cardbus Type II | | | | | |
| Operation Voltage | | 3.3VDC | | | | | |
| Antenna Ports | | Dual MMCX (Primary only required; secondary optional for diversity) | | | | | |
| Temperature Range | | -40C to +80C (extended temp version up to +95C) | | | | | |
| Security | | WPA, WPA2, AES-CCM & TKIP Encryption, 802.1x, 64/128/152bit WEP | | | | | |
| Data Rates | | 6Mbps, 9Mbps, 12Mbps, 24Mbps, 36Mbps, 48Mbps. 54Mbps | | | | | |
| RoHS Compliance | | YES | | | | | |
| REGULATORY INFORMATION | | | | | | | |
| Wireless Modular Approvals | | FCC PART90Y and Industry Canada. Approval covers antenna use up to 27dBi | | | | | |
| RADIO OPERATING FREQUENCY 4.94-4.99GHz | | | | | | | |
| TX SPECIFICATIONS | | | | RX SPECIFICATIONS | | | |
| 4.9GHz OFDM | DataRate | TX Power | Tolerance | 4.9GHz OFDM | DataRate | Sensitivity | Tolerance |
| | 6Mbps | 23 dBm | +/-1.5dB | | 6Mbps | -94 dBm | +/-1.5dB |
| | 9Mbps | 23 dBm | +/-1.5dB | | 9Mbps | -93 dBm | +/-1.5dB |
| | 12Mbps | 23 dBm | +/-1.5dB | | 12Mbps | -91 dBm | +/-1.5dB |
| | 18Mbps | 23 dBm | +/-1.5dB | | 18Mbps | -90 dBm | +/-1.5dB |
| | 24Mbps | 23 dBm | +/-1.5dB | | 24Mbps | -86 dBm | +/-1.5dB |
| | 36Mbps | 21 dBm | +/-1.5dB | | 36Mbps | -83 dBm | +/-1.5dB |
| | 48Mbps | 20 dBm | +/-1.5dB | | 48Mbps | -77 dBm | +/-1.5dB |
| | 54Mbps | 19 dBm | +/-1.5dB | | 54Mbps | -74 dBm | +/-1.5dB |
| CURRENT CONSUMPTION INFORMATION | | | | | | | |
| TX CURRENT CONSUMPTION | | | | RX CURRENT CONSUMPTION | | | |
| 4.9GHz OFDM | DataRate | Current | Tolerance | 4.9GHz OFDM | DataRate | Current | Tolerance |
| | 6Mbps | 0.80 A | +/-100 mA | | 6Mbps | 300 mA | +/-100 mA |
| | 9Mbps | 0.80 A | +/-100 mA | | 9Mbps | 300 mA | +/-100 mA |
| | 12Mbps | 0.80 A | +/-100 mA | | 12Mbps | 300 mA | +/-100 mA |
| | 18Mbps | 0.80 A | +/-100 mA | | 18Mbps | 300 mA | +/-100 mA |
| | 24Mbps | 0.80 A | +/-100 mA | | 24Mbps | 300 mA | +/-100 mA |
| | 36Mbps | 0.70 A | +/-100 mA | | 36Mbps | 300 mA | +/-100 mA |
| | 48Mbps | 0.65 A | +/-100 mA | | 48Mbps | 300 mA | +/-100 mA |
| | 54Mbps | 0.55 A | +/-100 mA | | 54Mbps | 300 mA | +/-100 mA |
| 4.9GHz PUBLIC SAFETY FREQUENCY CHANNEL SUPPORT | | | | | | | |
| Frequency | 5MHz | 10MHz | 20MHz | Frequency | 5MHz | 10MHz | 20MHz |
| 4942.5 MHz | | | | 4967.5 MHz | | | |
| 4945.0 MHz | | | | 4970.0 MHz | | | |
| 4947.5 MHz | | | | 4972.5 MHz | | | |
| 4950.0 MHz | | | | 4975.0 MHz | | | |
| 4952.5 MHz | | | | 4980.0 MHz | | | |
| 4957.5 MHz | | | | 4982.5 MHz | | | |
| 4960.0 MHz | | | | 4985.0 MHz | | | |
| 4962.5 MHz | | | | 4987.5 MHz | | | |
| 4965.0 MHz | | | | | | | |
| RANGE PERFORMANCE | | | | | | | |
| Indoor (Antenna Dependent): | | Up to 100meters | | | | | |
| Outdoor (Antenna Dependent): | | Over 1km | | | | | |
| DRIVER INFORMATION | | | | | | | |
| Operating System Support | | Linux MADWIFI, WindowsXP, Windows2000 | | | | | |
| Advanced Mobility / QuickHandoff | | WindowsXP/2000 Utility with Enhanced Mobility Driver from Ubiquiti | | | | | |
| Cisco Support | | CCX 4.0 Supported Driver/Utility also available from Ubiquiti | | | | | |
| For help with MADWIFI or other Special Driver Support, Please e-mail support@ubnt.com | | | | | | | |
| LAPTOP ANTENNA INFORMATION | | | | | | | |
| Antenna Dimensions | | 5.1 in x 0.83 in | | | | | |
| Cable | | 18 in with MMCX plug | | | | | |
| Antenna Type / Polarization | | Omni-directional / Vertical Polarized | | | | | |
| Antenna Gain | | 4dBi | | | | | |
| Mounting Type | | Adjustable Laptop Clip Mount and Sticker Mount Included | | | | | |